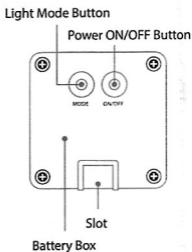
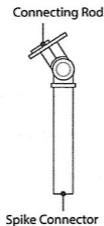


User Guide

Solar Powered String Light
Solarbetriebene Lichterkette
Guirlande lumineuse solaire
Luce a corde ad energia solare
Luz de cuerda con energía solar



PRODUCT FEATURES

- **Energy-saving & Eco-friendly:** Skip the higher electricity bills. During the day, the efficient solar panel converts the sunlight into electrical energy stored in the build-in rechargeable battery, then the string lights will automatically light up at night.

Multi-application scenarios: The String Lights is a great decorative

- **Accessory** to illuminate indoor and outdoor spaces, like your gardens, patio, fence, gate, yard, wedding, party, Christmas trees etc. And the copper wire is quite flexible, easily bent into any shape you like

8 Working Modes: Choose the lighting effect you prefer and

- **create romantic atmosphere.**

Splashing Waterproof: Both the string lights and the solar panel

- **are IP65 Waterproof.** No worry to use them during the raining days.

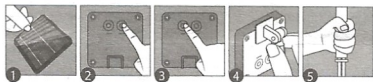
SPECIFICATIONS

Battery Type	Rechargeable NI-MH battery
Battery Volt	1.2 Volt
Battery Charge Time	6-8 hours when sun light > 30,000 lux
Battery Run Time	8-12 hours / full charge
Lifetime (Solar Panel)	2 years
Lifetime (Battery)	400 cycles or 1.5 year
Temperature Conditions	-15°C to 45°C
Weatherproofing	Waterproof / Outdoor Safe/ Rain-proof
Working Mode	8 Working Modes (Cycles all modes)
Certifications	CE Certified

INSTALLATION GUIDE

1. Tear off the protective film from the solar panel
2. Press the Power ON/OFF button, and keep the light at "ON" stage for normally daily charging.
3. Set your favorite working mode by MODE button in the evening, or get something cover the solar panel in the daytime
4. Insert the connecting rod into the slot
5. Connect the spike to connecting rod, insert the spike in the desired location where the solar panel can get sufficient sunlight throughout the day

(The spike should be mounted in such a way that the solar panel is facing south at a 20-30 degree angle)



ATTENTIONS

1. To maximize battery capacity, the solar sensor string light should be fully charged by direct sunlight at least for eight hours before initial use
2. To ensure the normal working of light detector, please install the solar panel away from other light sources
3. Do not immerse the Battery Box into the water



Direct sunlight



Children Forbidden



No Striking



Splash Waterproof



No Fire